

STATE OF FLORIDA  
 COUNTY OF PALM BEACH

THIS PLAT WAS FILED FOR  
 RECORD \_\_\_\_\_  
 THIS \_\_\_\_\_ DAY OF \_\_\_\_\_  
 AD, 2000 AND DULY RECORDED  
 IN PLAT BOOK \_\_\_\_\_ ON PAGES  
 \_\_\_\_\_ AND \_\_\_\_\_

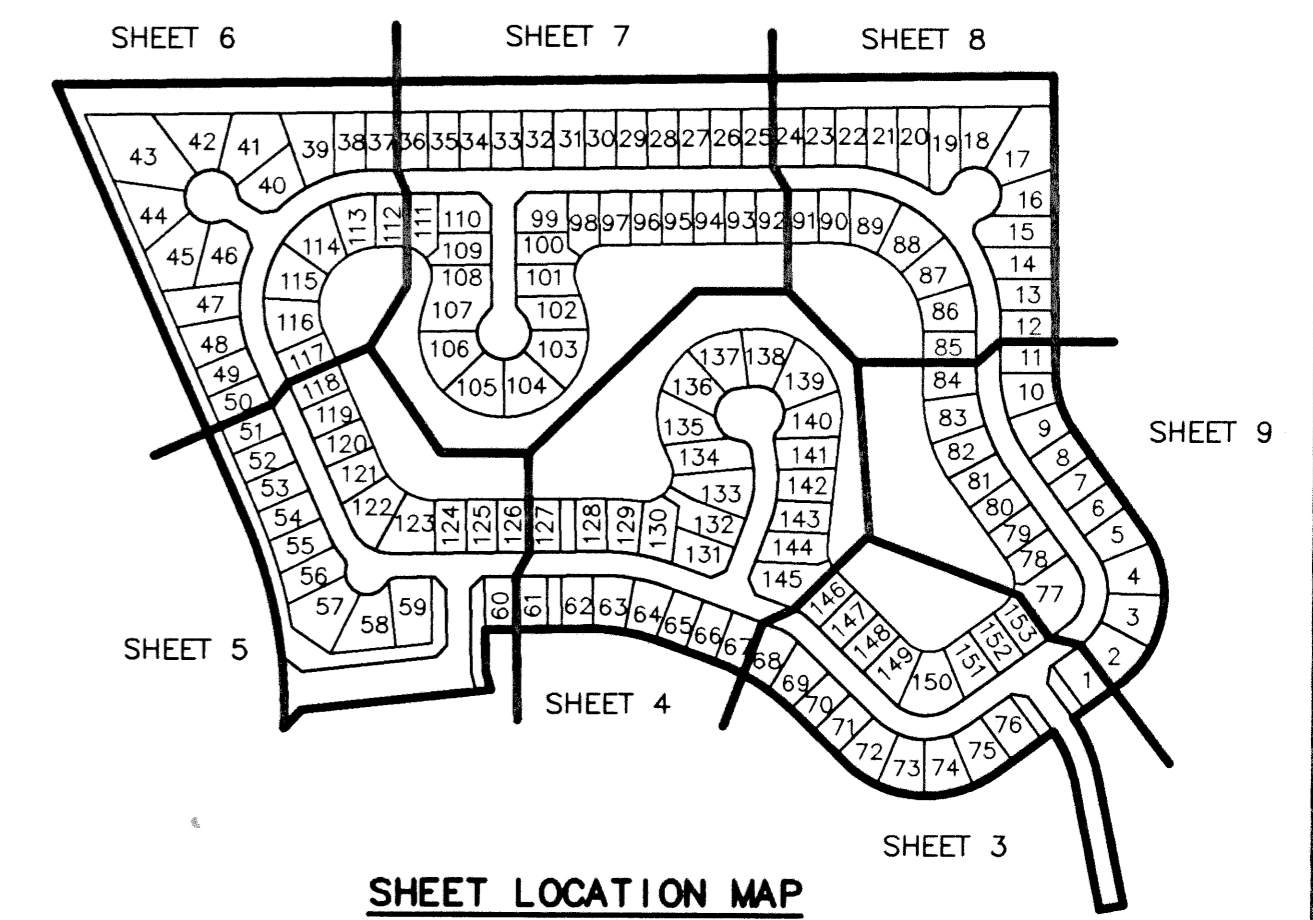
DOROTHY H. WILKEN, CLERK  
 BY: \_\_\_\_\_, D.C.

CIRCUIT COURT SEAL



# JOURNEY'S END PLAT THREE

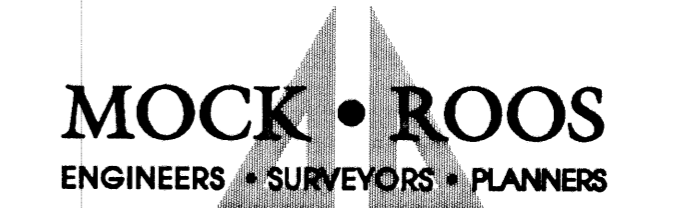
PART OF SMITH DAIRY EAST P.U.D.  
 SITUATE IN SECTIONS 3 AND 4, TOWNSHIP 45 SOUTH, RANGE 42 EAST,  
 BEING A REPLAT OF A PORTION OF BLOCKS 38 AND 39,  
 AND THE 50' RIGHT OF WAY, AS SHOWN ON THE PLAT OF  
 PALM BEACH FARMS COMPANY, PLAT NO. 3, PB 2, PGS 45 - 54,  
 PALM BEACH COUNTY, FLORIDA  
 MAY, 1999 SHEET 4 OF 9



- LEGEND**
- L ARC LENGTH
  - AE ACCESS EASEMENT
  - BE BUFFER EASEMENT
  - Δ CENTRAL (DELTA) ANGLE
  - CH CHORD
  - DE DRAINAGE EASEMENT
  - LAE LIMITED ACCESS EASEMENT
  - LME LAKE MAINTENANCE EASEMENT
  - LMAE LAKE MAINTENANCE ACCESS EASEMENT
  - PUD PLANNED UNIT OF DEVELOPMENT
  - (NR) NON-RADIAL
  - ORB OFFICIAL RECORD BOOK
  - PB PLAT BOOK
  - PG(S) PAGE(S)
  - R RADIUS
  - (TYP) TYPICAL
  - UE UTILITY EASEMENT
  - PERMANENT REFERENCE MONUMENT
  - FOUND LB-048
  - PERMANENT REFERENCE MONUMENT
  - SET LB-048
  - PERMANENT CONTROL POINT
  - SET LB-048
  - ⊕ CENTERLINE

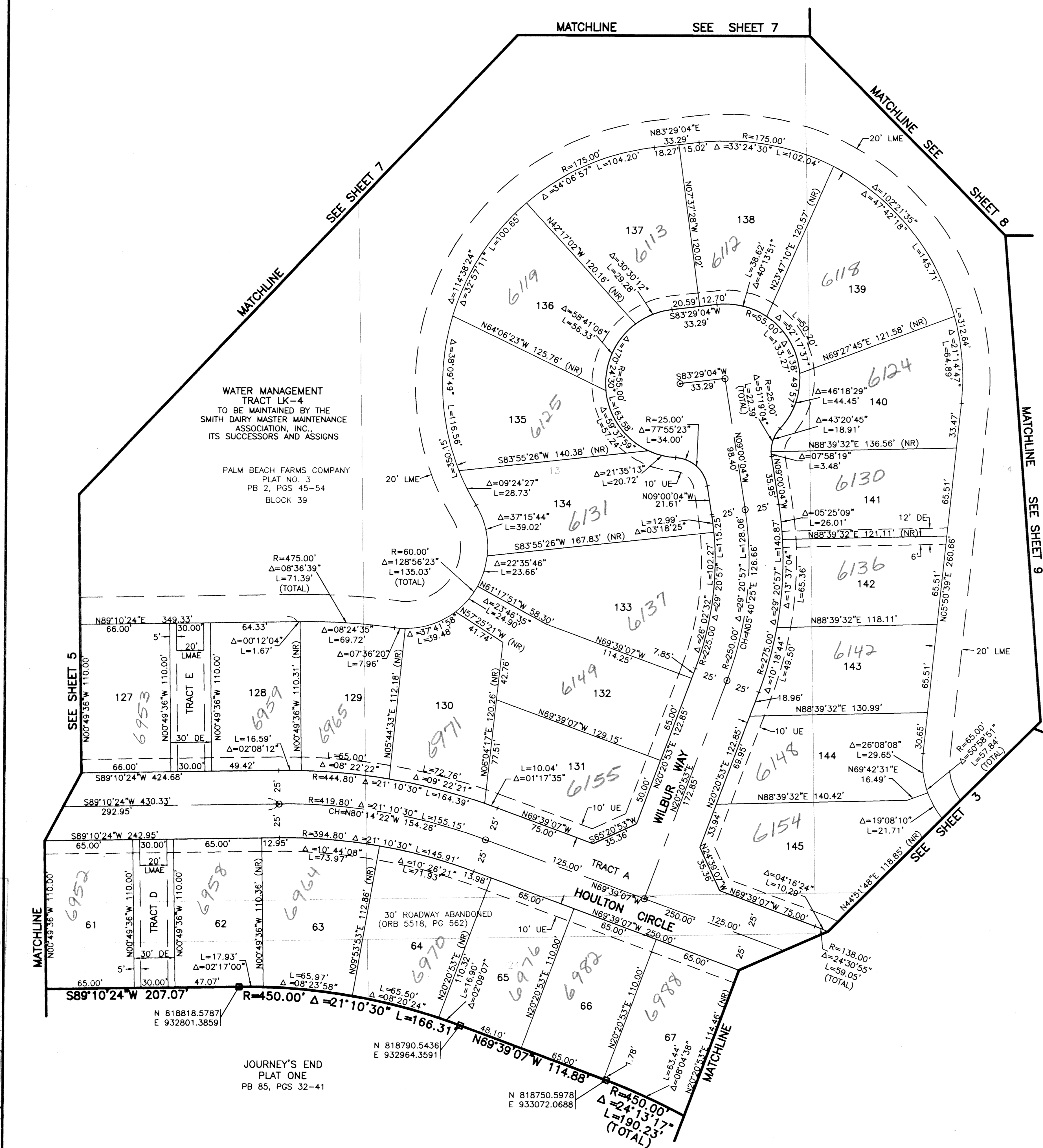
THIS INSTRUMENT WAS PREPARED BY DAVID L. SMITH, P.S.M. IN THE  
 OFFICES OF MOCK, ROOS & ASSOCIATES, INC., 5720 CORPORATE WAY, WEST  
 PALM BEACH, FLORIDA 33407.

SCALE:	1"=40'
P.A. NO.:	98082.72
DATE:	MAY, 1999
DRAWING NO.:	45-42-03-79



5720 Corporate Way, West Palm Beach, Florida 33407  
 (561) 683-3113, Fax 478-7248

JOURNEY'S END PLAT THREE  
 PART OF SMITH DAIRY EAST P.U.D.  
 SITUATE IN SEC 3 AND 4, TWP 45 S., RGE 42 E.,  
 BEING A REPLAT OF A PORTION OF BLOCKS 38 AND 39,  
 AND THE 50' RIGHT OF WAY, AS SHOWN ON THE PLAT OF  
 PALM BEACH FARMS COMPANY, PLAT NO. 3, PB 2, PGS 45-54,  
 PALM BEACH COUNTY, FLORIDA



SUBDIVISION Journey's End  
 BOOK 87  
 PAGE 122  
 FLOOD ZONE 6  
 ZONING SE  
 QUAD # 49 24  
 SE 948  
 TAZ 948  
 ZIP CODE 33463  
 PUD NAME

REV.: 7-22-99  
 CAD FILE:  
 WESTSM\_B/SM\_BRPO3

JOURNEY'S END  
 PLAT ONE  
 PB 85, PGS 32-41

N 818818.5787  
 E 932801.38591

N 818790.5436  
 E 932964.3591

N 818750.5978  
 E 933072.0688